


CYJ IMPORT & EXPORT 2025

# EXPANDABLE HOUSING

SMART. AFFORDABLE. READY TO LIVE.



 [www.expandablehousing.au](http://www.expandablehousing.au)

 0490837242 Ruby

 0490247058 Adam

 36 Cypress street inala QLD 4077

OPEN TO LEARN MORE ➔



# CYJ

+0490 247 058

[www.expandablehousing.com](http://www.expandablehousing.com)

## ABOUT US

CYJ import export

We provide modern expandable container homes built for flexibility, comfort, and value. Designed for Australian conditions, our homes offer a practical alternative to traditional construction, supported by a clear process and professional service from start to finish.

## SERVICES OFFERED:



Premium home design



Affordable pricing



best housing solution



[expandablehousing.au](http://expandablehousing.au)

# FIND YOUR PERFECT HOME!

Discover Exclusive  
Properties in 36 cypress  
street Inala QLD 4077

# How it works

## **1. Council & Site Check**

**We review your property zoning and council requirements to confirm suitability for an expandable home.**

## **2. Choose Your Home**

**Select your preferred model, layout, and optional upgrades to suit your needs.**

## **3. Approval & Documentation**

**Council approval, certification, and site preparation are completed with supporting documents provided.**

## **4. Deposit & Order Confirmation**

**Once approved (or approval-in-principle), a deposit is paid and your order is placed into production.**

## **5. Manufacturing**

**Your home is manufactured to the confirmed specifications and undergoes quality checks.**

## **6. Shipping & Scheduling**

**Shipment is arranged and delivery timing is confirmed. Crane access planned if required.**

## **7. Delivery & Setup**

**Your home is delivered to site, expanded, positioned, and ready for final connections.**



# INCLUSIONS

EACH OF OUR EXPANDABLE HOMES IS DELIVERED READY FOR FIT-OUT, WITH ESSENTIAL FEATURES CAREFULLY SELECTED FOR COMFORT, DURABILITY, AND COMPLIANCE.

## Kitchen & Bathroom

- Kitchen sink
- Shower
- Toilet
- Vanity unit
- Mirror
- 

## Interior & Finishes

- 
- Insulated wall panels
- Cement fibre flooring
- LED downlights
- Reinforced steel floor structure
- Waterproof roof membrane
- All fixings, screws, and silicone included

## Windows & Doors

- Aluminium-framed windows
- Aluminium door frames
- Fly screens fitted to windows
- Double-glazed windows for insulation and noise reduction
- 
- 
- 

## Electrical & Compliance

- 
- Full internal electrical wiring
- Electrical safety switchboard
- Electrical components compliant with Australian SAA Standards
- Pre-installed lighting points
- Structural & Engineering
- Reinforced steel framework
- Structural certification provided

## OPTIONAL UPGRADES

Clients may customise their home with the following upgrade options:

- External cladding finishes
- Increased ceiling height
- Skillion-style roof design
- Colourbond roofing
- Enhanced interior lighting packages

## ADDITIONAL SERVICES

To support a smooth delivery and installation, we also offer:

- Australia-wide delivery
- Crane hire (if required)



# Model 1A — Standard Ceiling

expandablehousing.au

**Home Supply: \$40,000**

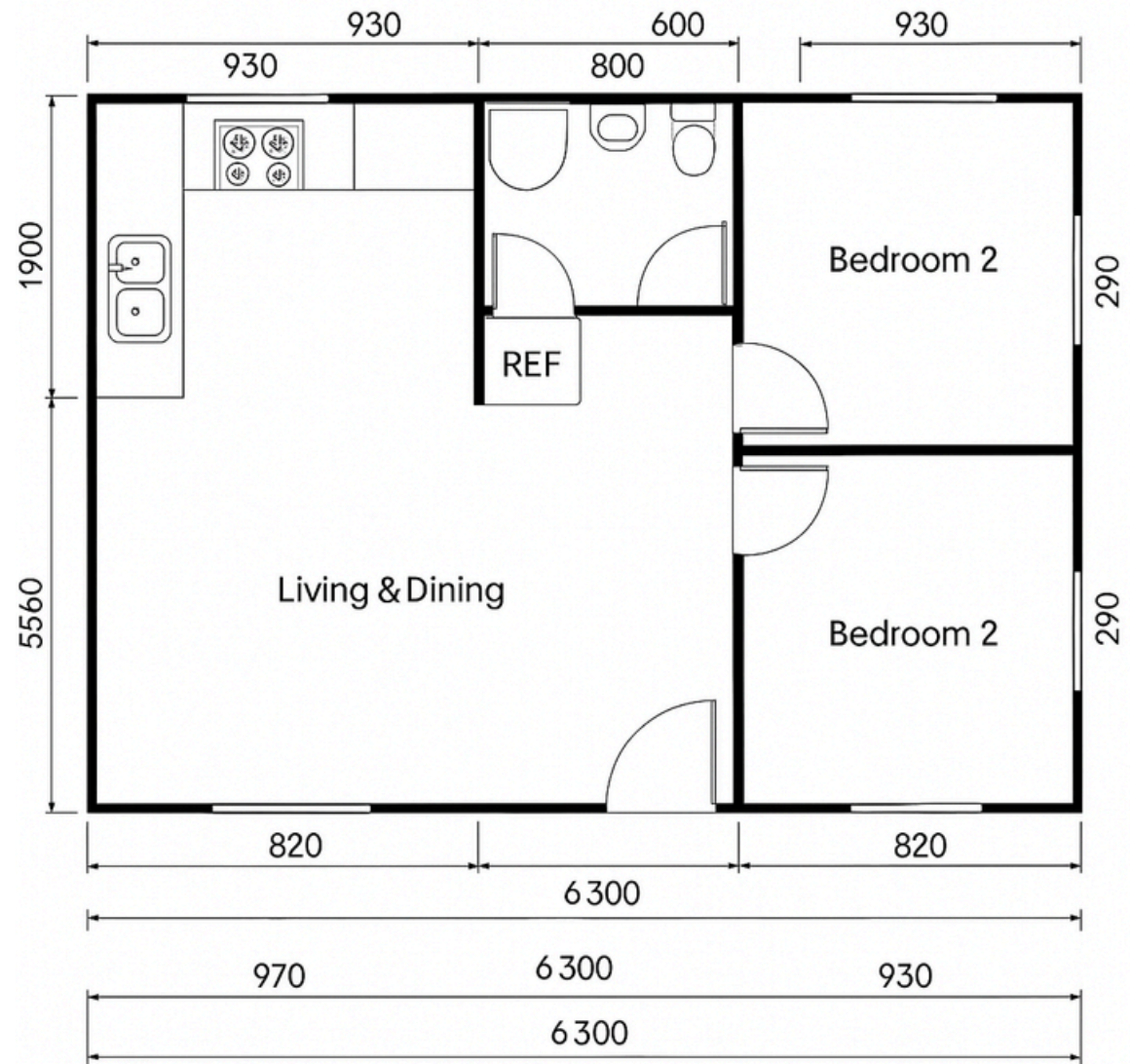
Size: 6.79m × 5.75m

Internal Ceiling: 2.4m

Floor Area: ~38 sqm

**Estimated Turnkey: \$50,000**

(Includes builder install, plumbing, electrical, certifier & council approval)



# Model 1A — Standard Ceiling

[expandablehousing.au](https://expandablehousing.au)



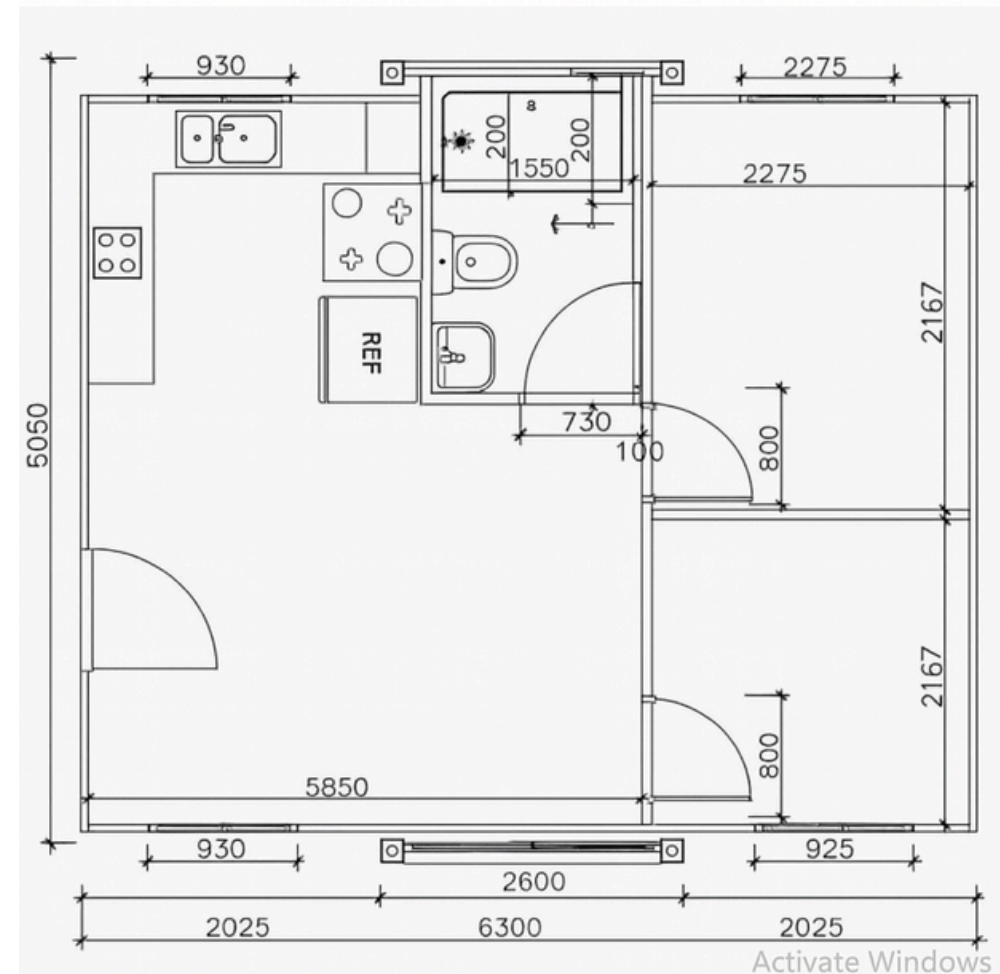


# Model 1B — High Ceiling Upgrade 20ft [expandablehousing.au](https://expandablehousing.au)

**Home Supply: \$47,000**

Specifications: 6.3M x 5.85M - 37SQM  
Internal Ceiling: 2.7m

**Estimated Turnkey: \$55,000**



(Includes builder install, plumbing, electrical, certifier & council approval)

## Model 1B — High Ceiling Upgrade

[expandablehousing.au](https://expandablehousing.au)





# Model 2A — Standard Ceiling

expandablehousing.au

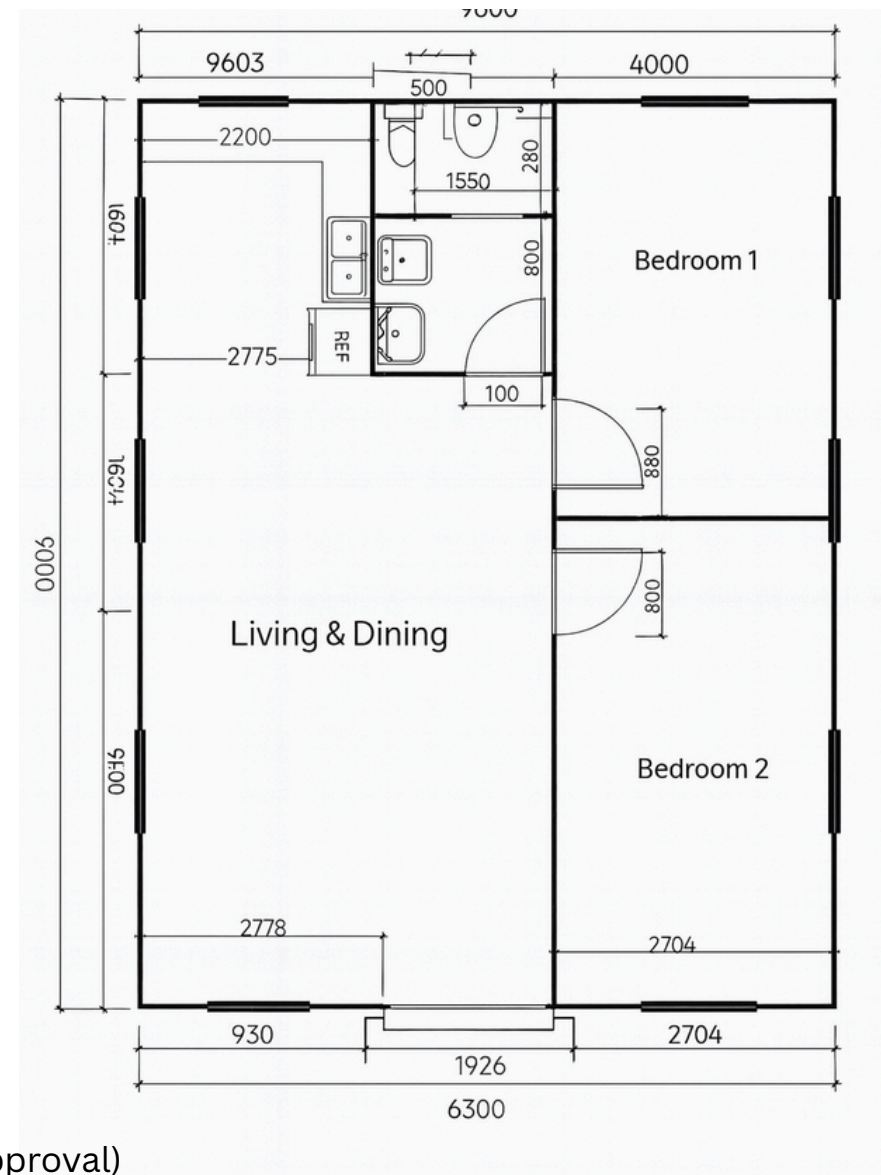
**Home Supply: \$60,000**

Specifications: 6.3M x 9M - 57SQM

Ceiling: 2.4m

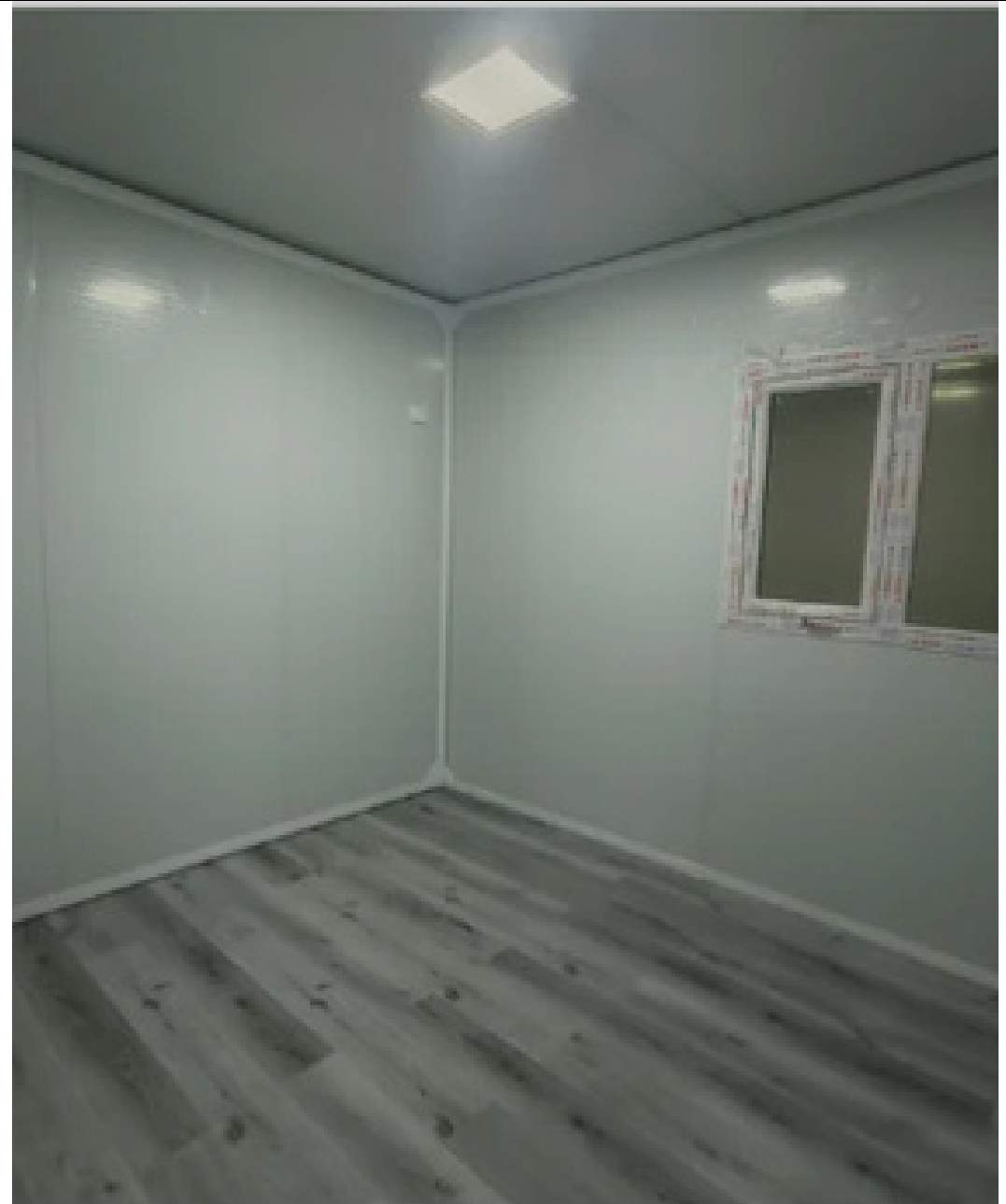
**Estimated Turnkey: \$60,000**

(Includes builder install, plumbing, electrical, certifier & council approval)



# Model 2A — Standard Ceiling

[expandablehousing.au](http://expandablehousing.au)





# Model 2B — High Ceiling Upgrade

expandablehousing.au

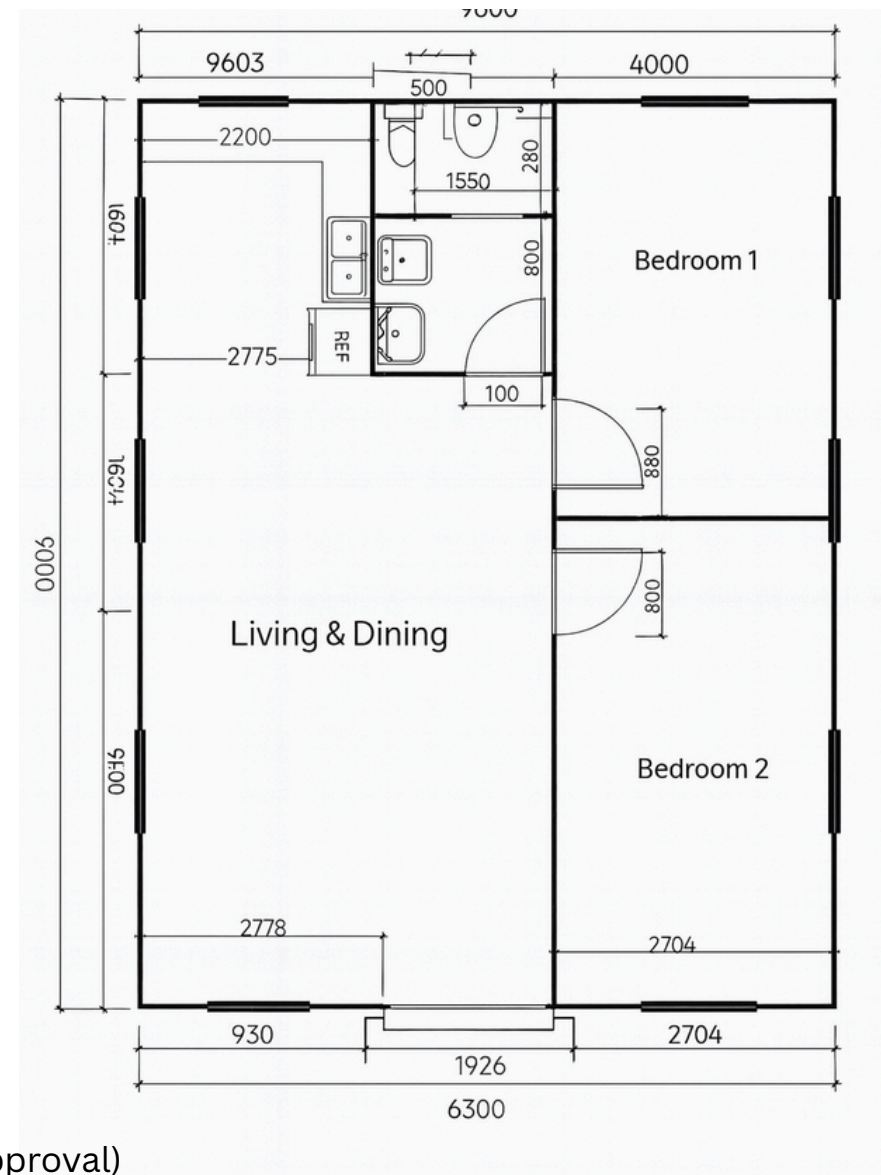
**Home Supply: \$ \$65,000**

Specifications: 6.3M x 9M - 57SQM

Ceiling: 2.7m

**Estimated Turnkey: \$70,000**

(Includes builder install, plumbing, electrical, certifier & council approval)



# Model 2B — High Ceiling Upgrade

[expandablehousing.au](http://expandablehousing.au)

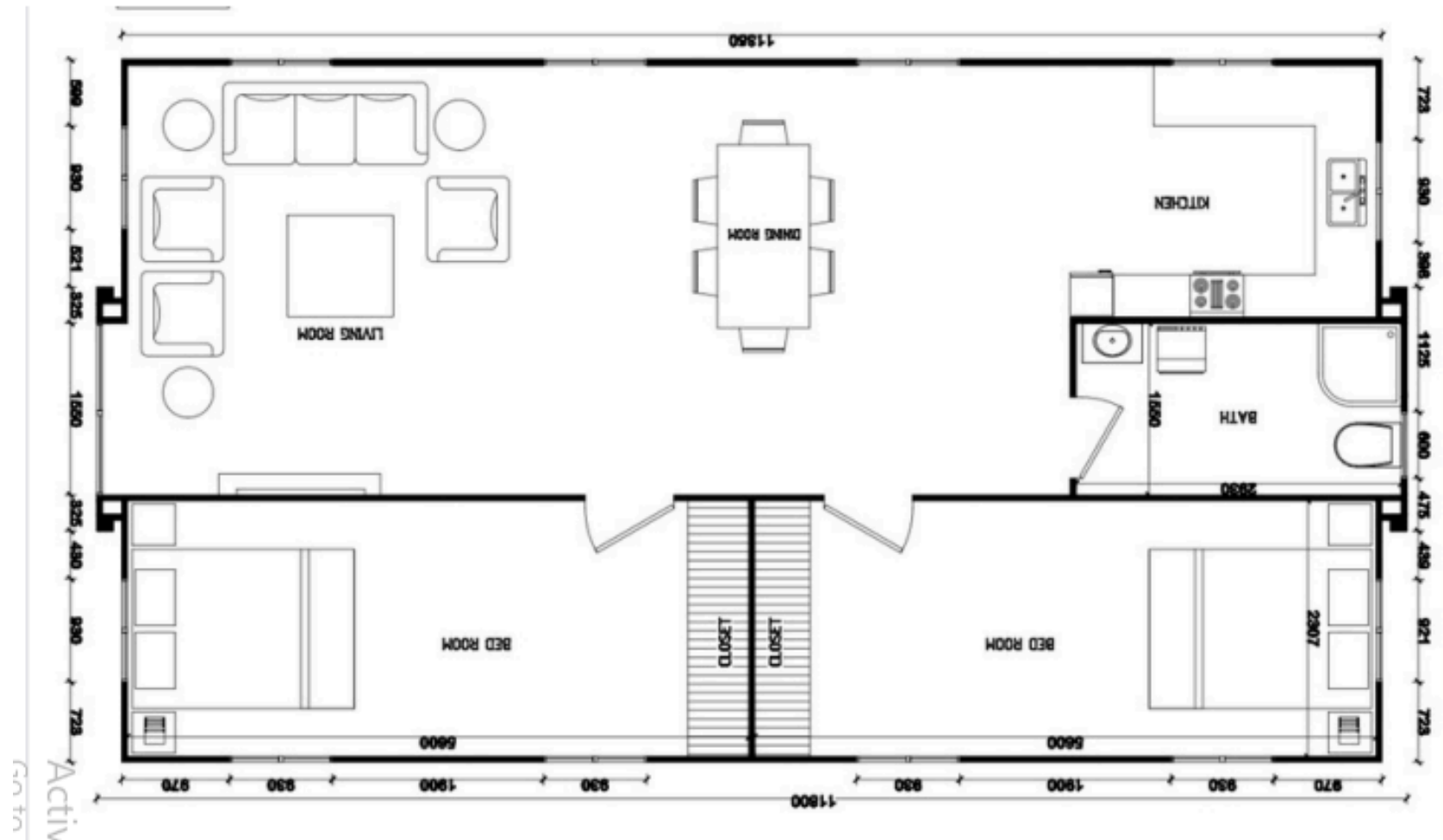




# Model 3A — Standard Ceiling

expandablehousing.au

Home Supply: \$65,000



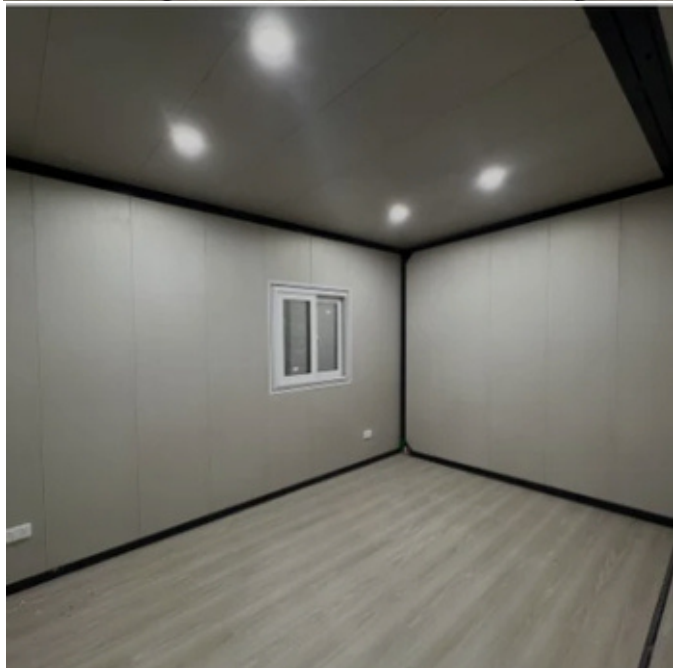
Specifications: Size 11.5m × 6.79m  
Ceiling: 2.4m

**Estimated Turnkey: \$70,000**

(Includes builder install, plumbing, electrical, certifier & council approval)

# Model 3A — Standard Ceiling

[expandablehousing.au](http://expandablehousing.au)

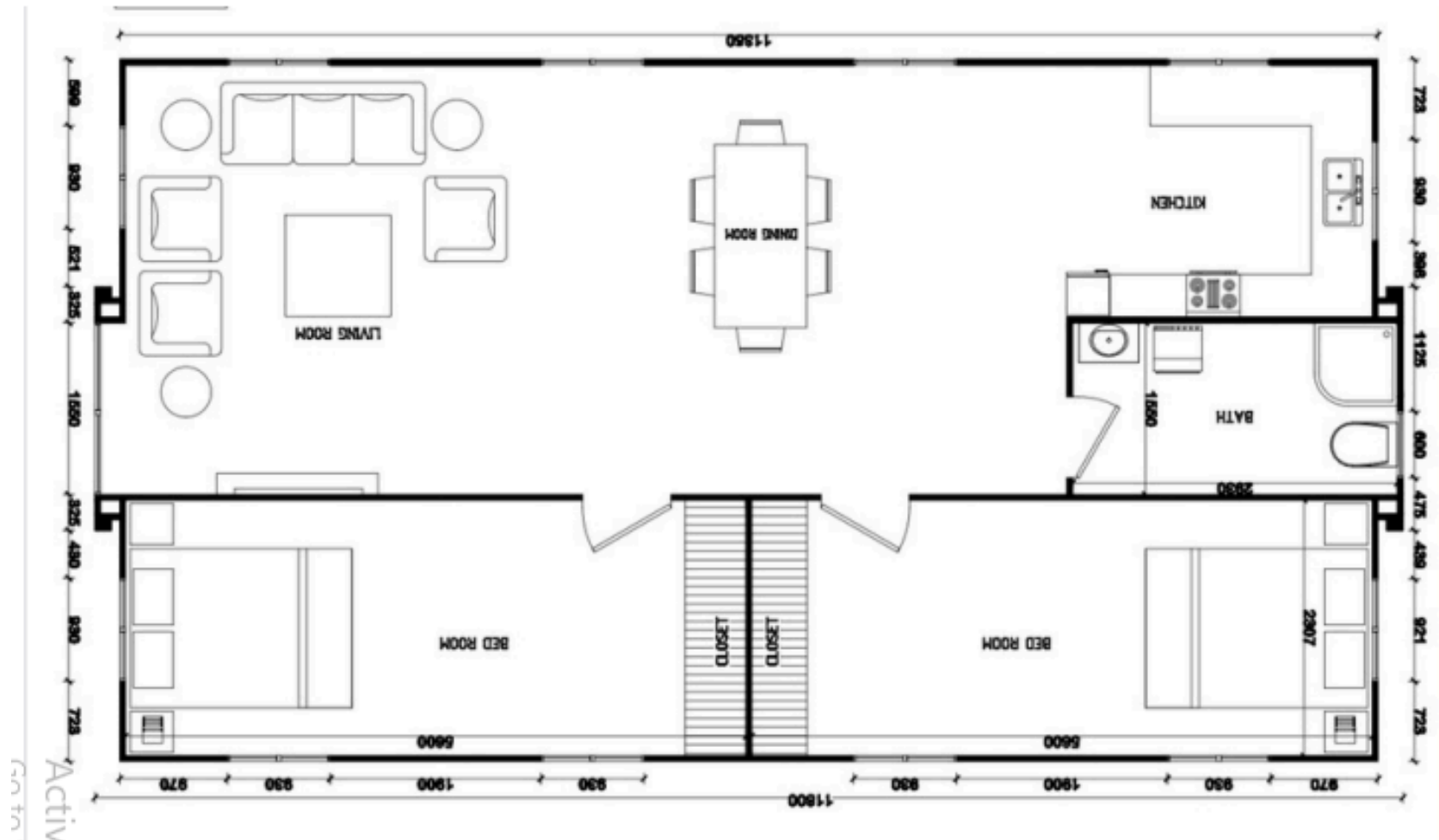




# Model 3B — Larger Layout

expandablehousing.au

Home Supply: \$\$70,000



Specifications: Size: 11.4m × 6.79m  
Ceiling: 2.7m

**Estimated Turnkey: \$75,000**

(Includes builder install, plumbing, electrical, certifier & council approval)

# Model 3B — Larger Layout

[expandablehousing.au](http://expandablehousing.au)







**CONTACT US:**

Expandablehousing.au  
cyjimportexport@gmail.com

0490837242 Ruby  
36cypress street inala